



Offer no.: 2-97-08-1040  
 Project: MMTE  
 Date:

## TECHNICAL DATA SHEET SINGLE STAGE PUMP

Item	Designation	EQUIP. NAME	Quantity
PU-K 64	K WPK150-315	RAW WATER STORAGE TANK	2

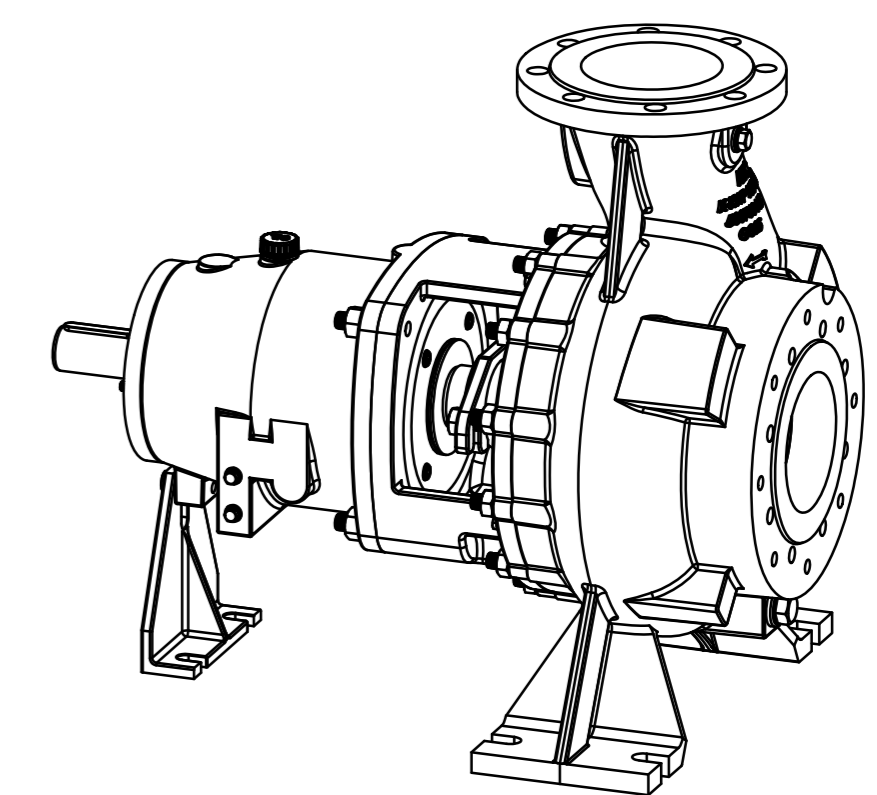
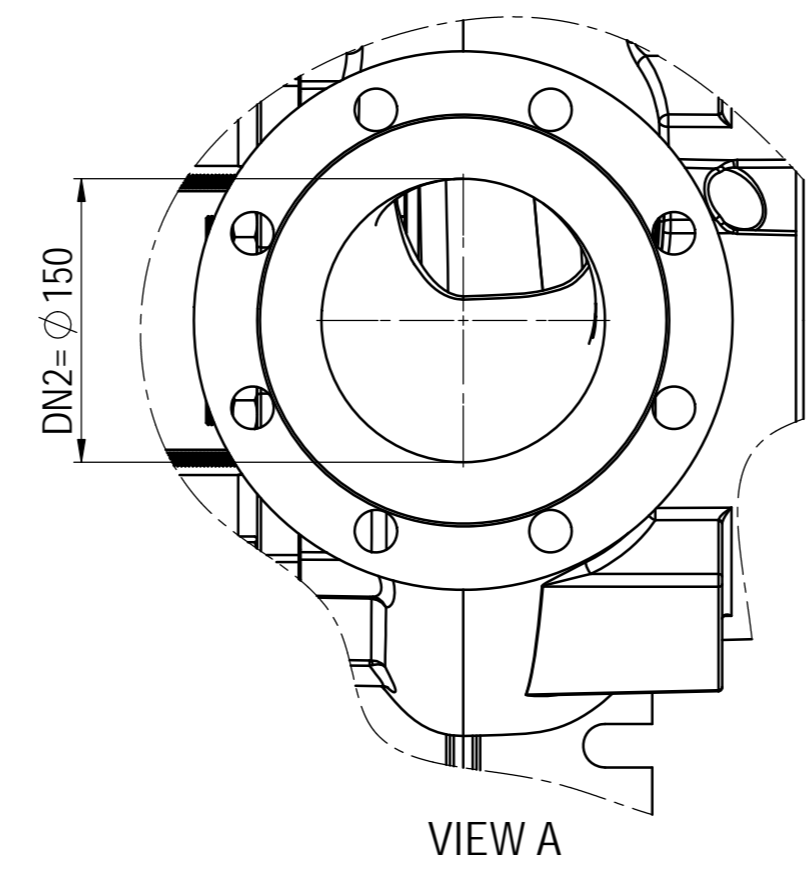
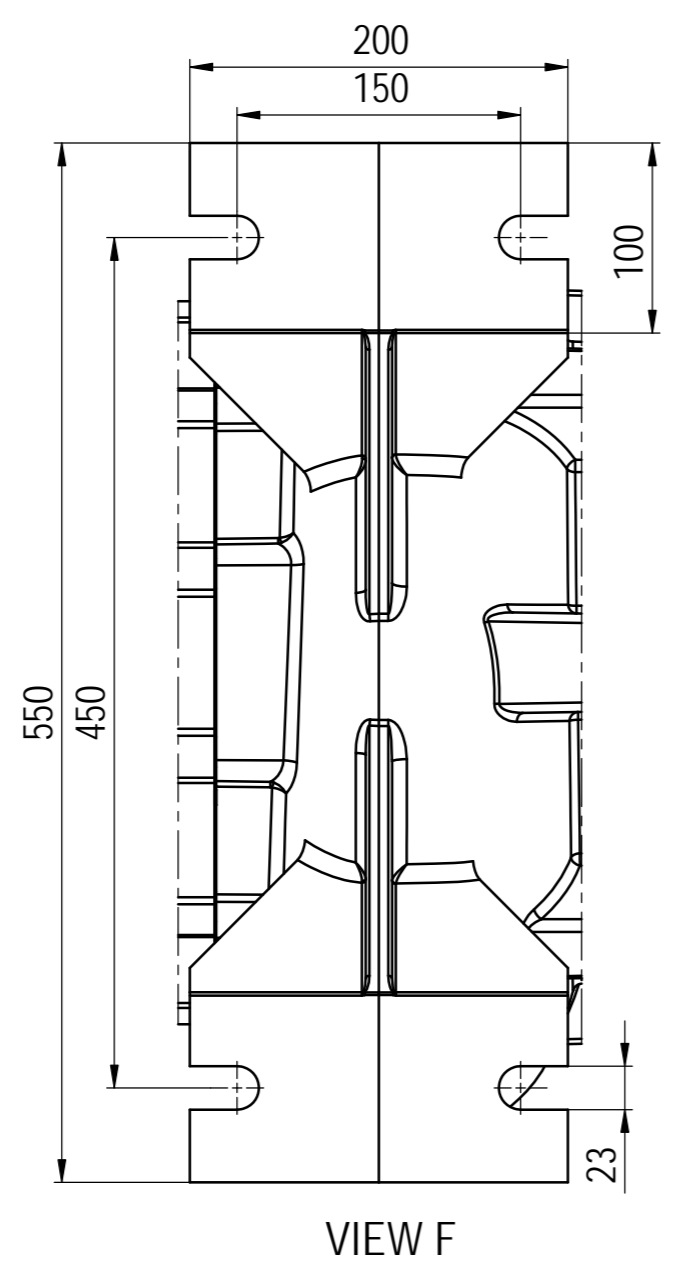
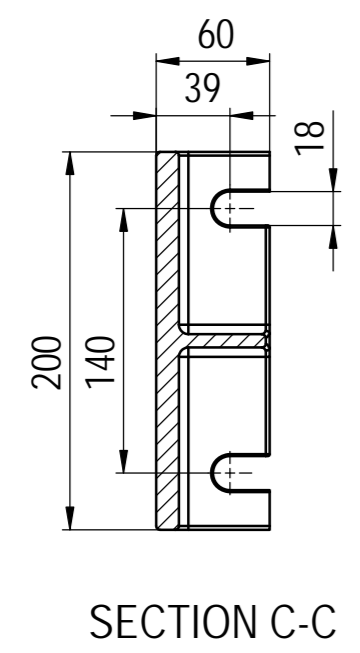
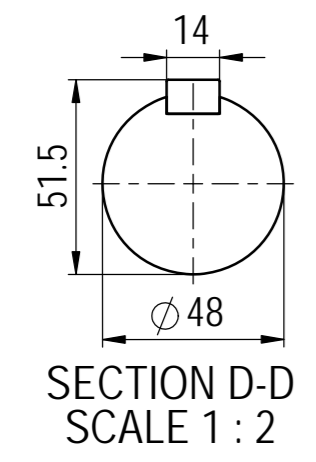
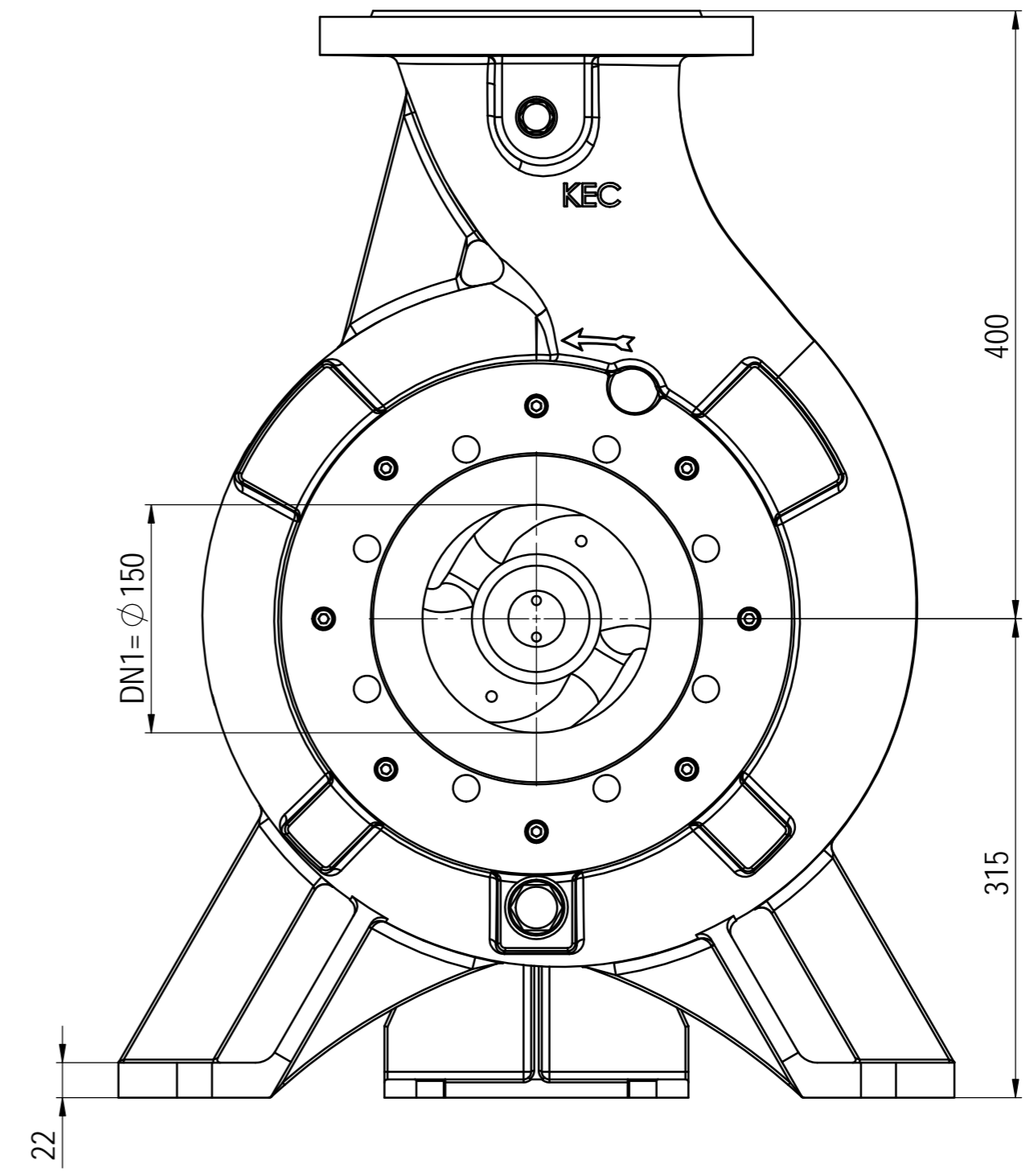
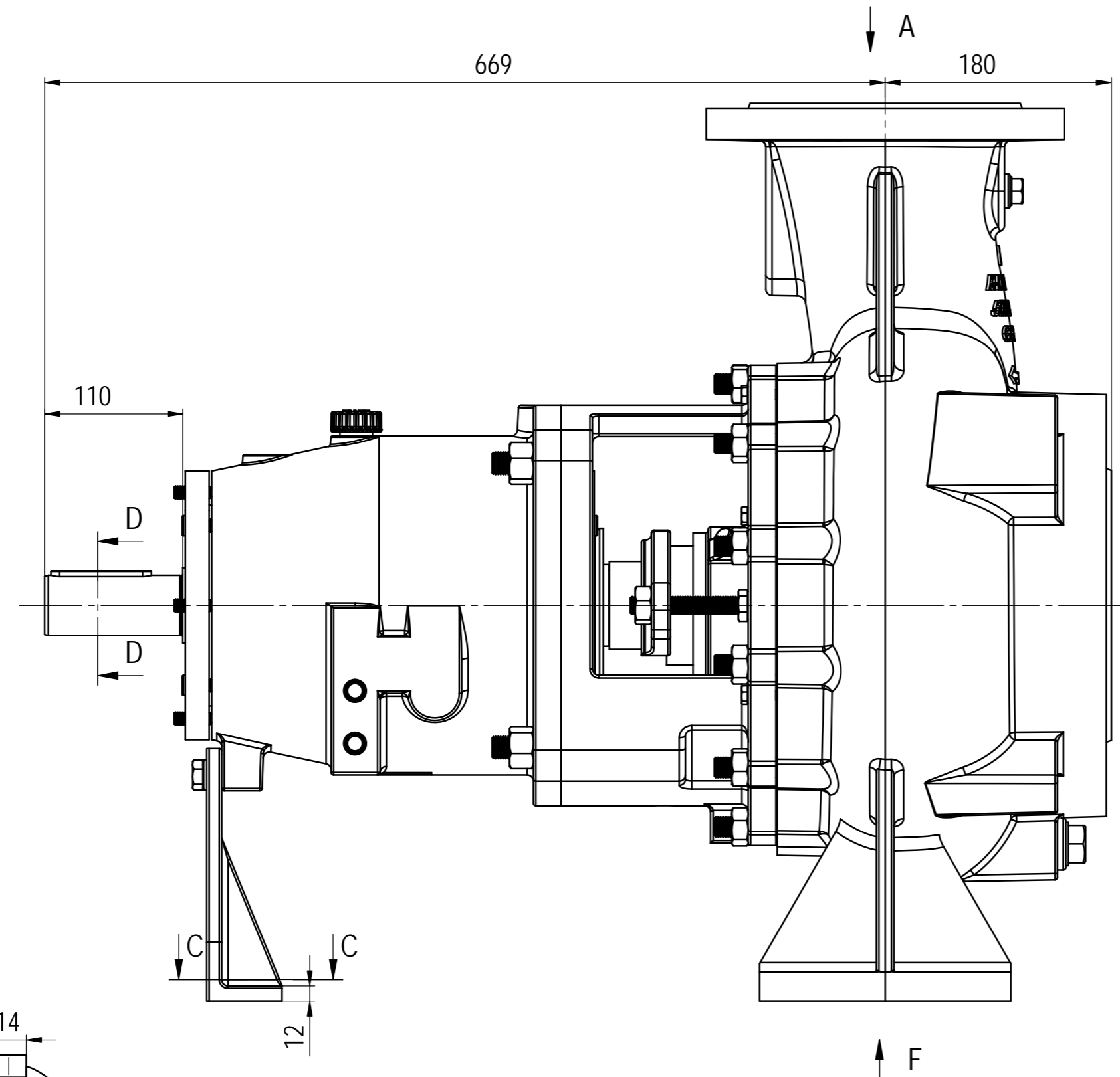
Pumped liquid			
Type	Raw Water	Corrosive	Yes (CL 3500ppm)
Nature	Liquid	Temperature	Mini
Density	1 g/cm3		° C
Content in solid body	< 50 ppm	PH	7-8.1
Viscosity	mm <sup>2</sup> /s		


Running - Characteristics			
Point Nominal ISO 9906 Grade 3		Pump speed	1450 rpm
Flow	250 m3/h	Impeller diameter	320mm
Total Head	2.95 bar	Running	Fixed speed
Pump efficiency	75%	Suction flange	DN150
NPSHr	2 m	Suction pressure	PN10
Shaft power	26.5 kW	Delivery flange	DN150
Motor power	55 kW	Delivery pressure	PN10

Materials			
Pump casing	Duplex (1.4468)	Bearing lubrication	Oil
Wear plate, suction side	Duplex (1.4468)	Thrust bearing	NU 411
Suction Cover	Duplex (1.4468)	Radial bearing	2*713 BG
Discharge cover	Duplex (1.4468)	Baseplate	Carbon steel
Shaft	SS420	Coupling	Flexible
Impeller	Duplex (1.4468)	Coupling guard	
Bearing Bracket	GG-25	Sealing	Mechanical seal
Bearing bracket lantern	GG-25	• Type	
Stuffing box housing	GG-25	Screw	CS
Shaft protecting sleeve	Duplex (1.4462)	Paint	Epoxy
Impeller screw	SS304	Color	Blue

Driver informations			
Manufacturer	Simense	Voltage	380
Type	Electric motor	F	50Hz
Nominal power	55 kW	Phase	3
Nominal speed	1450 rpm	Insulation class	F
IP	55		

Rev	Date	Drawn	Checked	Approved



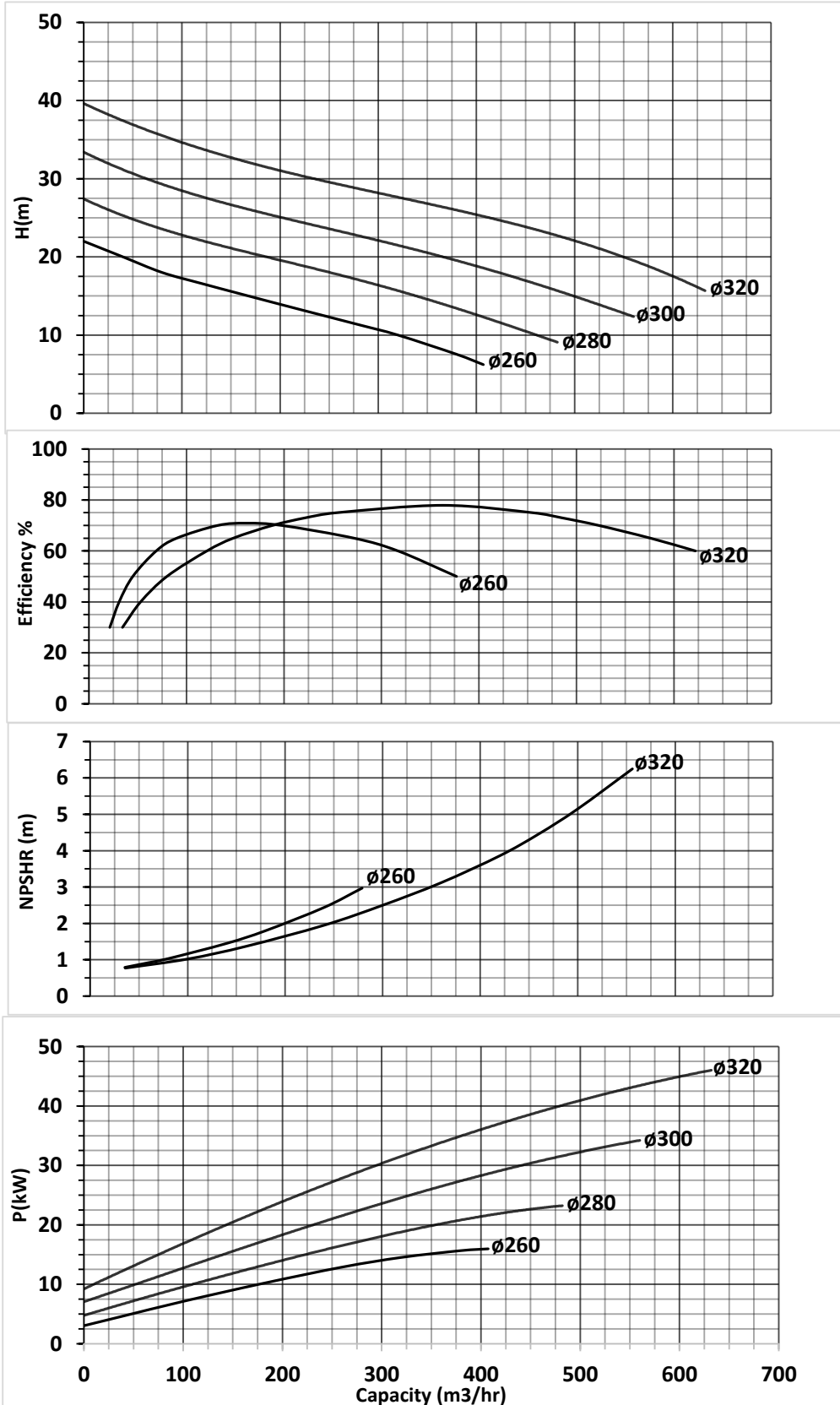
Product No.: KNCP 150-315		Designed	Date	Name	General Tolerances: DIN EN 735	
Ref.Dwg.No.:		Drawn		Zamanpou	SCALE: 1:5	Qty: 1 Weight: (Kg)
Tag.No.:		Checked		Arbabi	Material-Code: Material No.:	
Part.No.:		Approved		Majd	Title: KNCP 150-315	
Order.No.:		 <b>شرکت مهندسی ماهین های دوار خاور</b> <b>KHAVAR ENGINEERING CO.</b>			Drawing No.: REV	
Sheet 1 of 1	Size A2				Unit mm	1 0 0 5 0 0 7 6 0 0 0 0 0 3 8 7 0 0 0 0 00
					Repl. for: ---	Repl. Date: ---

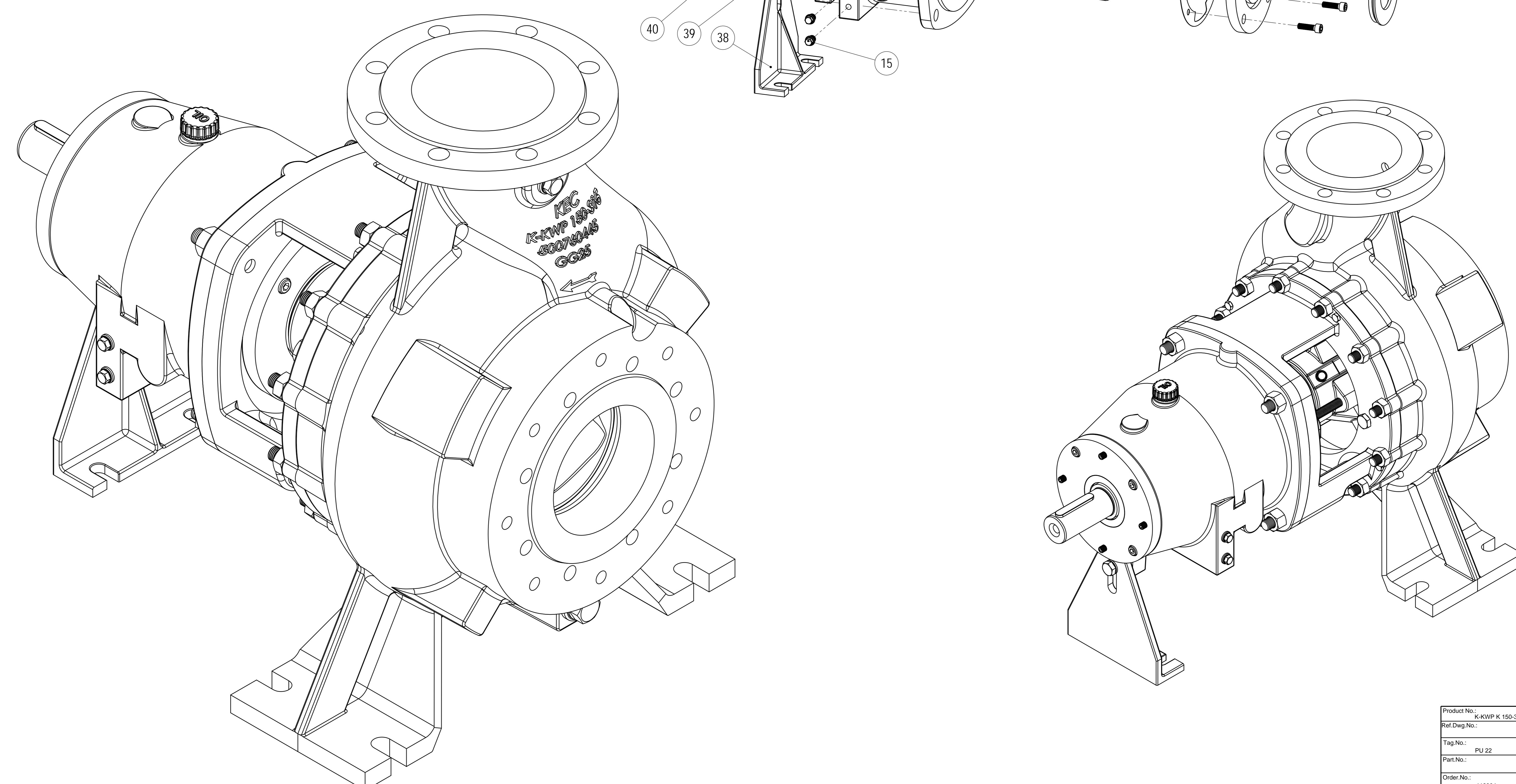
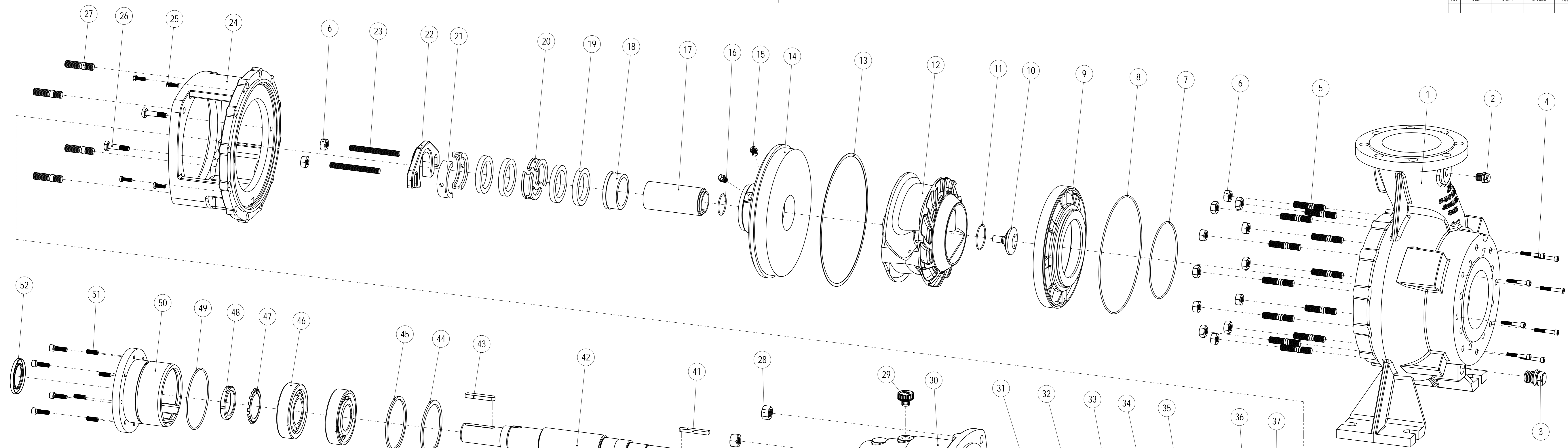
Pump model : KNCP 150-315
Project code:
Offer ref:




Flow density: 998 kg/m <sup>3</sup>
Viscosity: 1 mm/s <sup>2</sup>
Speed of rotation: 1450 RPM
Acceptance standard: ISO 9906

## KNCP 150-315





52	1	Lip Seal-DIN 3760 - A - 60 x 90 x 8 - NBR
51	4	Socket Set Screw -M10-ISO 4026
50	1	Bearing Carrier
49	1	O-rings _DIN 3771-150x3.55
48	1	Luck Nut-DIN 981 - KM 13
47	1	Luck Washer-DIN 981 - MB13
46	2	Angular Contact Ball Bearing_7313 BE
45	1	Spacer
44	1	Circlip DIN 472 - 140 x 4
43	1	Key A14x9x80-DIN6885
42	1	Shaft
41	2	Parallel Key
40	1	Screw -M14-ISO 4017
39	1	Spring Washer -DIN 128 -A14
38	1	Support Foot
37	1	Thrower
36	8	Socket Head Cap -M10-DIN 912
35	1	Bearing Cover
34	1	Gasket Cover Bearing Bracket
33	1	Lip Seal-DIN 3760 - AS - 65 x 90 x 10 - NBR
32	1	Cylindrical Roller Bearing_ NU413
31	1	Circlip DIN 472 - 160 x 4
30	1	Bearing Bracket
29	1	Oil Plug
28	4	Nut -M18 -ISO 4034
27	4	Stud Bolt-M18 -DIN 939
26	2	Screw -M12-DIN 6914
25	4	Screw -M8-ISO 4017
24	1	Bearing Bracket Lanter
23	2	Stud Bolt -M14-DIN 939
22	1	Gland cover
21	2	Lantr Ring (External)
20	2	Lantr Ring (Internal)
19	4	Packing
18	1	Neck Bush
17	1	Sleeve
16	1	O-rings _DIN 3771- 50x2.65
15	4	Plug-DIN 910 - G 1/4" A
14	1	Casing Cover
13	1	Gasket -325x7.5x1
12	1	Impeller
11	1	O-rings _DIN 3771- 60x2.65
10	1	Impeller Screw
9	1	Wear Plate
8	1	O-rings _DIN3771- 295x3.55
7	1	O-rings _DIN3771 -190x3.55
6	14	Nut -M16 -DIN 6915
5	12	Stud Bolt -M16-DIN 939
4	8	Socket Head Cap -M8-DIN 912
3	1	Plug-DIN 910 - G 1" A
2	1	Plug-DIN 910 - G 1/2" A
1	1	Casing

Product No.: K-KWP K 150-315	Designed: _____	Date: _____	Name: _____	General Tolerances: ISO 2768-mk
Ref Dwg No.: _____	Drawn: Zamirpour	SCALE: 1:5	Qty: 1	Weight: (Kg)
Tag No.: _____	Checked: Abasi	Material Code: _____	Material No.: _____	
Plant No.: P1122	Approved: Mjt	Title: K-KWP K 150-315		
Order No.: 112304	 <b>KEC</b> KHAVAR ENGINEERING CO.			Drawing No.: _____
Sheet 1 of 1				Size A0
1005007600003871000		1005007600003871000		